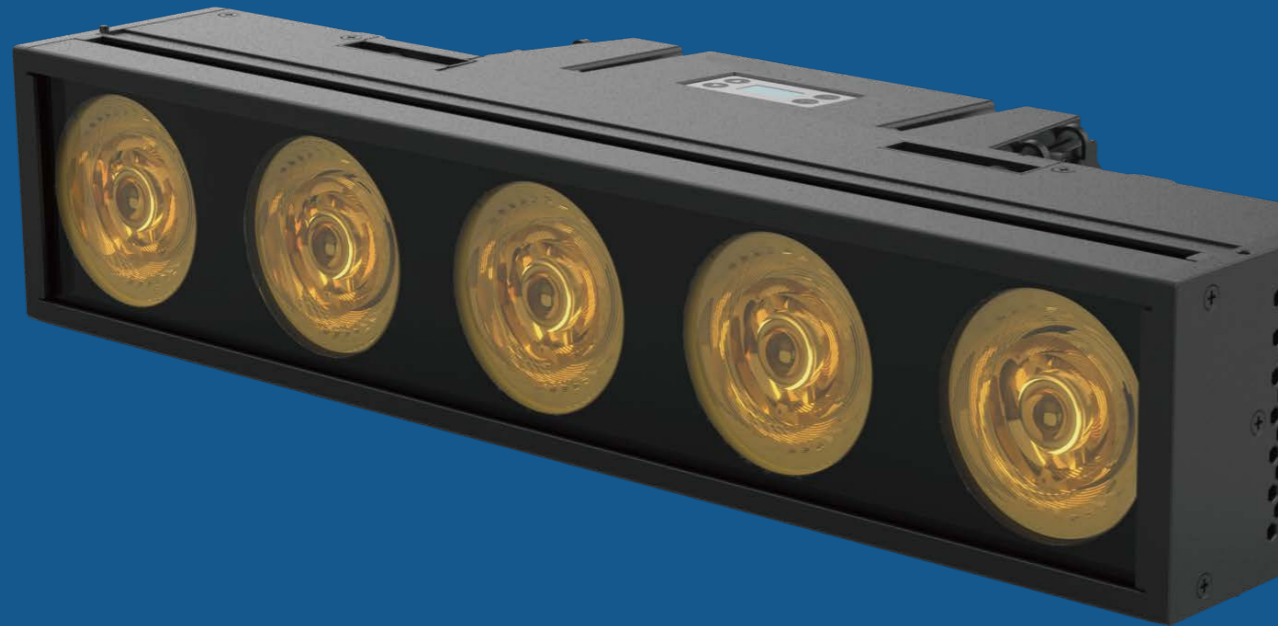


BLINDER LINE 5 IP

BLB 5 IP



Light Source

5 x 150W RGBAW LED

Beam Angle

23°, 34°, 52° (W)

24°, 33°, 55° (RGBA)

Field Angle

46°, 88°, 127° (W)

48°, 85°, 131° (RGBA)

Total Lumen Output of Fixture

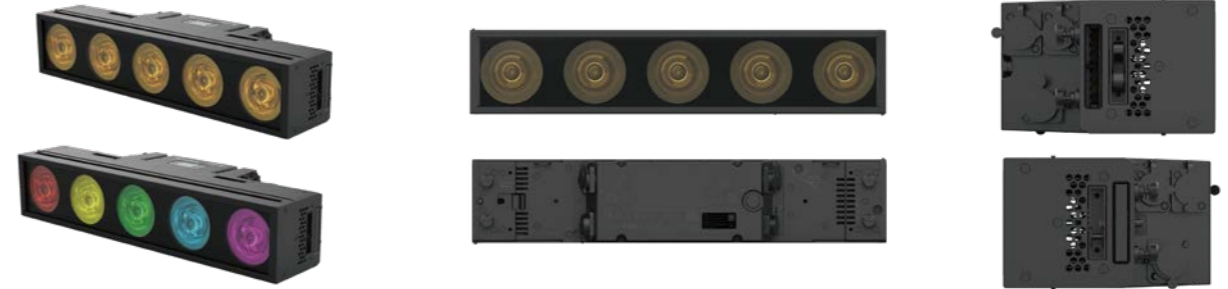
10,500 lumens

Protection Rating

IP66

Acme

BLINDER LINE 5 IP



Main Features

LED engine composed of 5 x 150W RGBAW

Individual pixel control and built-in color macro effects

DMX Controllable Smart Glass technology:

Patent No. :

CN216010577U

US11698183B1

DE202023101966U1

FR3134870B3

Tungsten emulation during dimming

Patented Smart Glass Technology for frost effects

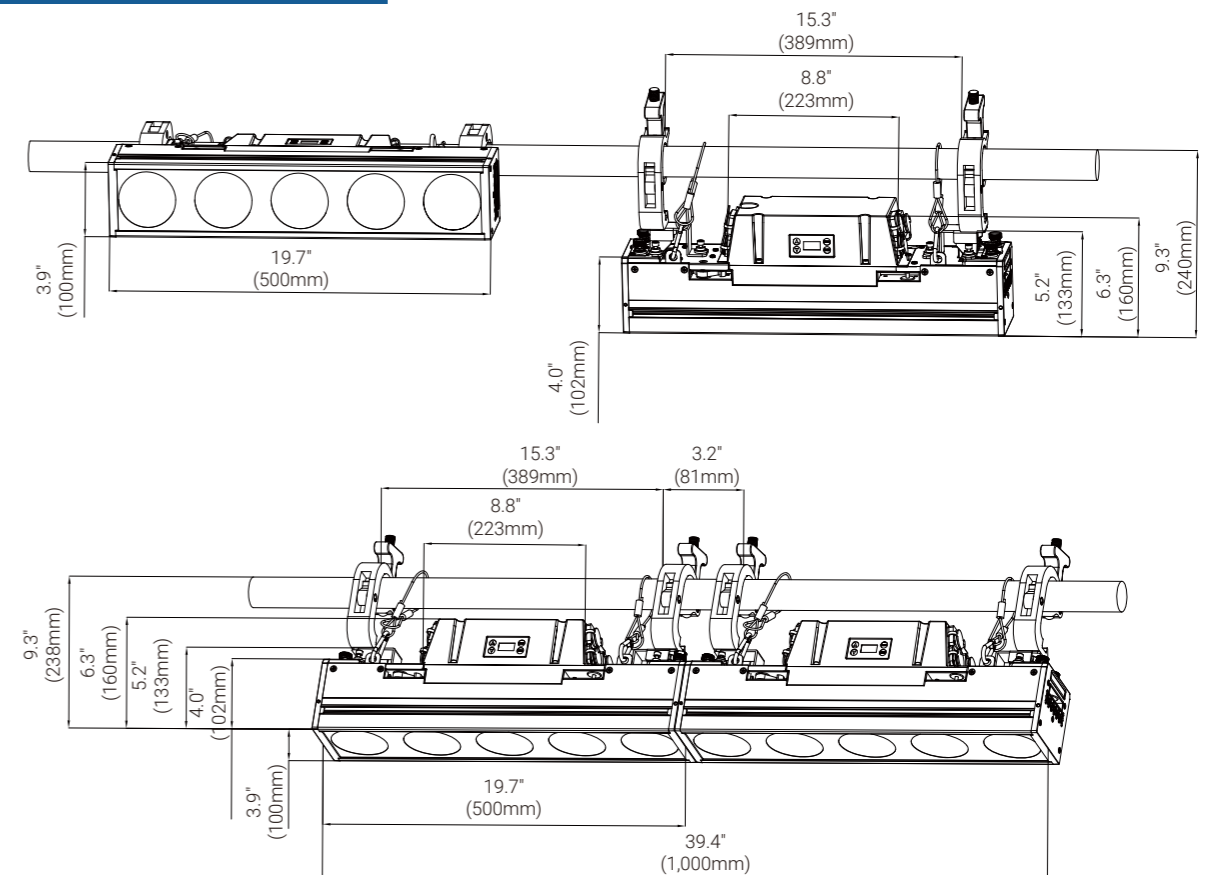
High output strobe effects

Smooth dimming 0-100%

Integrated interlocking system for combining units

IP66 rated

Technical Specifications



Light Source

- Light Source: 5 x 150W RGBAW LEDs
- Total Lumen Output of Fixture: 10,500 lumens
- Life Expectancy: 20,000 hours * manufacturer specification

Optical System

- Beam Angle: 23°, 34°, 52° (W)
24°, 33°, 55° (RGBA)
- Field Angle: 46°, 88°, 127° (W)
48°, 85°, 131° (RGBA)

Other Effects

- High output strobe effects
- Smooth dimming 0-100%
- Patented Smart Glass Technology for frost effects

Control

- 4 touch button control panel
- Display: OLED display
- Protocols: DMX512, RDM, Art-Net, sACN
- DMX Protocol Modes: 2
- Control Channels: 14/30
- Firmware Upgrade: Upgrade via DMX link

Electrical and Connectors

- Input Voltage Range: 100-240Vac; 50/60 Hz
- Power Consumption: 350W
- Power In/Out: Waterproof power connector in/out
- Data In/Out: 5-pin waterproof XLR, RJ45 connector

Physical Information

- Fixture Dimensions: 500 x 103.3 x 160.3 mm (19.7" x 4.1" x 6.3")
- Weight: 7.7 kg (17.0 lbs)

Packing Information

- Flight Case Dimensions: Standard: 880 x 580 x 890 mm (34.6" x 22.8" x 35.0")
Weight: G.W.: 115 kg (253.5 lbs) (eight-pack loader case)
North American Standard: 1,220 x 610 x 850 mm (48.0" x 24.0" x 33.5")
Weight: G.W.: 179 kg (394.6 lbs) (twelve-pack loader case)
- Carton Dimensions: 630 x 245 x 210 mm (24.8" x 9.6" x 8.3")
Weight: G.W.: 9.0 kg (19.8 lbs) (one-pack loader carton)

Work Environment

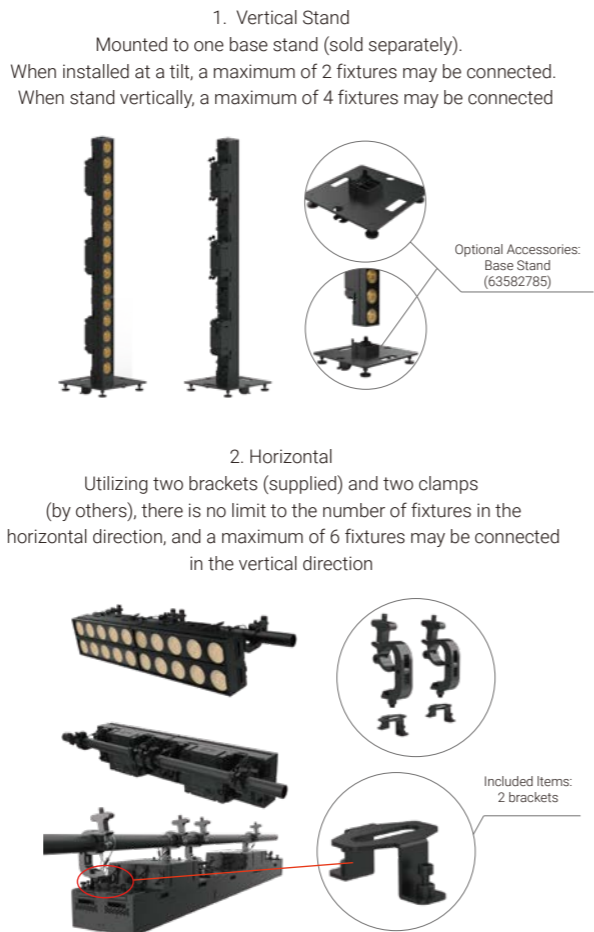
- Maximum Ambient Temperature: 40°C
- Minimum Operating Temperature: -10°C
- Maximum Surface Temperature: 70°C
- Protection Rating: IP66

Included Items

- Digital user manual
- Power cable
- 2 brackets

Installation

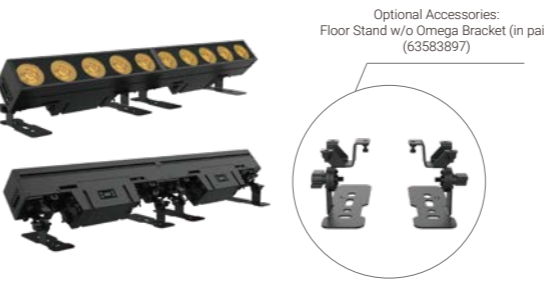
- Horizontally or vertically mounting
- Universal working position
- Vertical Stand: Mounted to one base stand (sold separately).
When installed at a tilt, a maximum of 2 fixtures may be connected.
When stand vertically, a maximum of 4 fixtures may be connected
- Horizontal: Utilizing two brackets (supplied) and two clamps (by others), there is no limit to the number of fixtures in the horizontal direction, and a maximum of 6 fixtures may be connected in the vertical direction
- Vertical: Using one hanging bracket (sold separately) with one clamp (by others), a maximum of 5 fixtures may be connected
- Floor: Two floor stands (sold separately) may be attached to base of unit
- Safety cable attachment point



2. Vertical
Using one hanging bracket (sold separately) with one clamp (by others), a maximum of 5 fixtures may be connected



4. Floor
Two floor stands (sold separately) may be attached to base of unit

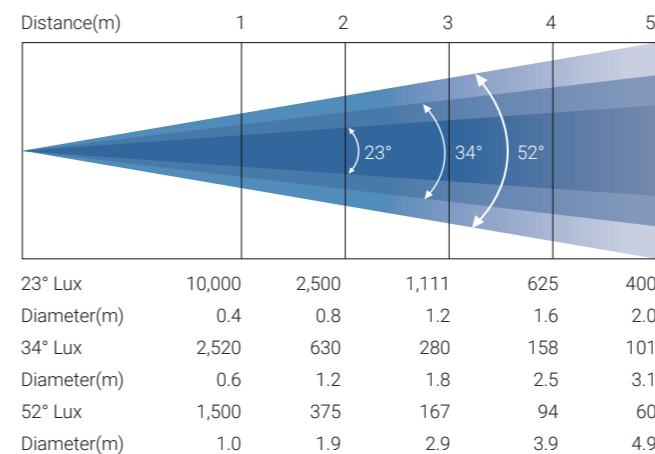


Optional Accessories (With Order Code)

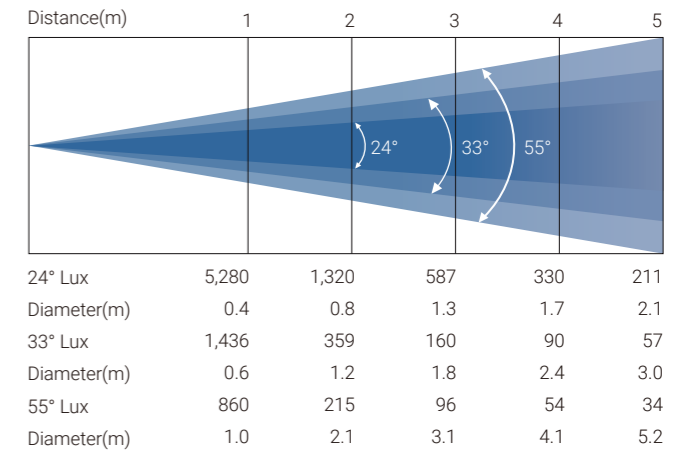
- Flight Case 1: Standard : Eight-pack loader case (63583465)
Flight Case 2: North American Standard : Twelve-pack loader case (63583456)
- Clamp : C-250B (2060001632-B)
- Safety Cable: SW-05 (2060001603-E)
- Signal Cable: 3-pin waterproof signal cable (3017013468) or 5-pin waterproof signal cable (3017013473)
- Hanging Bracket: 63582969
- Base Stand: 63582785
- Customized Floor Stand w/o Omega Bracket: 63583897 (in pair)

Photometric (Images)

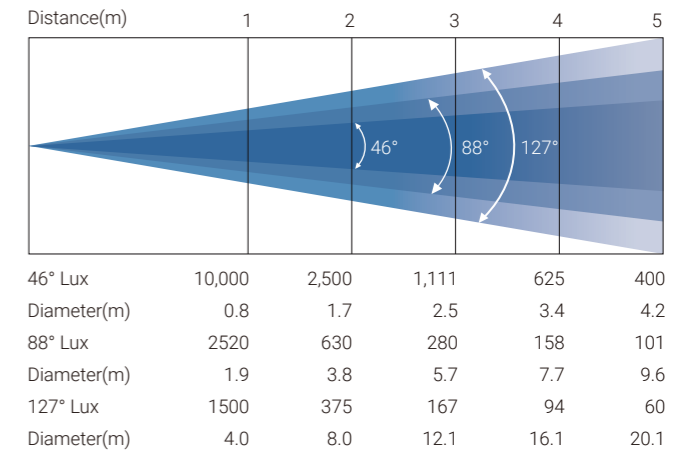
Beam Angle (W):



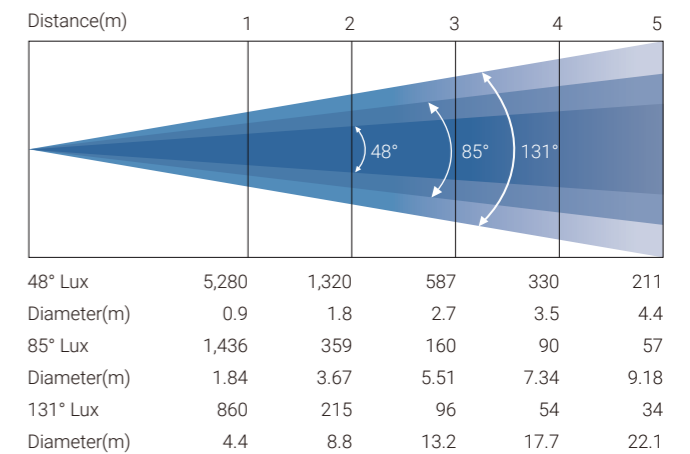
Beam Angle (RGBA):



Field Angle (W):



Field Angle (RGBA):



Specifications subject to change without notice.

08/22/2025