

BEAMONE

Indoor Moving Beam

SPEC SHEET



Foshan YiFeng Electric Industrial Co.,Ltd.

No.898, Gaoming Avenue East, Hecheng Blvd, Gaoming District, Foshan, Guangdong, China.

Web: www.acmelighting.com Email: sales@acmelighting.com

All rights reserved by Acme®. Features, specifications and appearance are subject to change without notice.

REV: 20/03/2026

Acme®

BEAMONE

Indoor Moving Beam

SPEC SHEET

FIXTURE OVERVIEW

- The **BEAMONE** is a compact indoor beam light, ideal for various entertainment applications such as theaters, wedding Halls and party rooms. Powered by the premium Osram SIRIUS HRI Galaxy 20D lamp with a long 8,000-hour life, the fixture produces a razor-sharp 2° beam through a 152 mm frontal lens, reaching an impressive 8,400 lumens of output at 7,300K color temperature.
- Creative flexibility is built in: a color wheel featuring 14 vibrant colors, and a static gobo wheel with 10 gobos and 3 effect gobos, and a rotating 8-facet circular prism all work together to deliver layered, multidimensional looks. A frost filter can also be engaged to soften the beam and shift the mood with ease.
- All this power and versatility comes in a sleek 15.5 kg (34.2 lbs) body—making the **BEAMONE** the perfect choice when you need big impact in a compact frame.



FEATURE HIGHLIGHTS

- Light Source: Osram SIRIUS HRI Galaxy 20D
- 152 mm diameter frontal lens
- Beam Angle: 2°
- Fixture Luminous Output: 8,400 lumens
- Color Temperature Output of Fixture: 7,300K
- 1 Color Wheel: 14 colors, plus open
- 1 Static Gobo Wheel: 10 gobos and 3 effect gobos, plus open
- 1 x 8-facet circular prism, rotatable in both directions
- 1 frost filter
- Motorized focus system
- Outstanding strobe effect with variable speed

TECHNICAL SPECIFICATIONS

Model

- Model Name: BEAMONE
- Model Code: BEAM 1

Light Source

- Light Source: Osram SIRIUS HRI Galaxy 20D
- Color Temperature Output of Fixture: 7,300K
- Life Expectancy: 8,000 hours
- *Source manufacturer specification

Photometric Data

- Fixture Luminous Output: 8,400 lumens
- CCT: 7,300K
- Ra: 75
- M-30 Rf (IES TM-30-15 Fidelity Index): 74
- TM-30 Rg (IES TM-30-15 Fidelity Index): 90
- TLCI: 43
- Peak Luminous Intensity: 28,900,000 cd

Optical System

- Diameter of Frontal Lens: 152 mm
- Beam Angle: 2°

Control & Program

- 4 touch button control panel
- Display: LCD display
- Protocols: DMX, RDM
- Setting and Addressing: Display menu, RDM
- DMX Modes: 1
- DMX Channels: 16
- Firmware Upgrade: Upgrade via DMX link or USB stick

Pan & Tilt

- Pan: 540°
- Tilt: 260°
- Automatic Pan/Tilt position correction
- Resolution: 16 bit

Color Wheel

- 1 Color Wheel: 14 colors, plus open

Static Gobo Wheel

- 1 Static Gobo Wheel:
 - 10 gobos and 3 effect gobos, plus open
- Gobo Dimensions
 - External Diameter: 110 mm (4.3")
- Coating: Black high-temperature coating
- Material: Aluminum alloy

Frost

- 1 frost filter

Focus

- Motorized focus system

Prism

- 1 x 8-facet circular prism, rotatable in both directions

Electrical

- Input Voltage Range: 100-240Vac; 50/60Hz
- Power Consumption: 335W
- Power In/Out: Power connector in/out
- Data In/Out: 3-pin or 5-pin XLR

Physical

- Weight: 15.5 kg (34.2 lbs)
- Length (Head): 307 mm (12.1")
- Length (Base): 304 mm (12.0")
- Width (Across Yoke): 308 mm (12.1")
- Height (Head Up): 485 mm (19.1")

Construction

- Housing: Eco-friendly flame-retardant nylon
- Color: Black
- Protection Rating: IP20

Work Environment

- Maximum Ambient Temperature: 45°C
- Minimum Operating Temperature: -10°C
- Maximum Surface Temperature: 80°C

Acoustic Data

- Standard Mode: Noise Level <50dB

TECHNICAL SPECIFICATIONS

Installation

- Horizontal or vertical mounting
- 2 omega brackets
- Safety cable attachment point

INCLUDED ITEMS

Included Items

- Digital user manual
- Power cable
- 2 omega brackets (3002000288-B)

ORDERING INFORMATION

Optional Accessories

(With Order Code)

- Clamp: C-250B (2060001632-B)
- Safety Cable: SW-02 (2060000200-B)
- Signal Cable: 3-pin or 5-pin signal cable

Carton Dimensions

- Width: 405 mm (15.9")
- Depth: 405 mm (15.9")
- Height: 570 mm (22.4")
- Weight:
G.W.: 18.6 kg (41 lbs) (one-pack loader carton)



C-250B: 2060001632-B



SW-02 (2060000200-B)



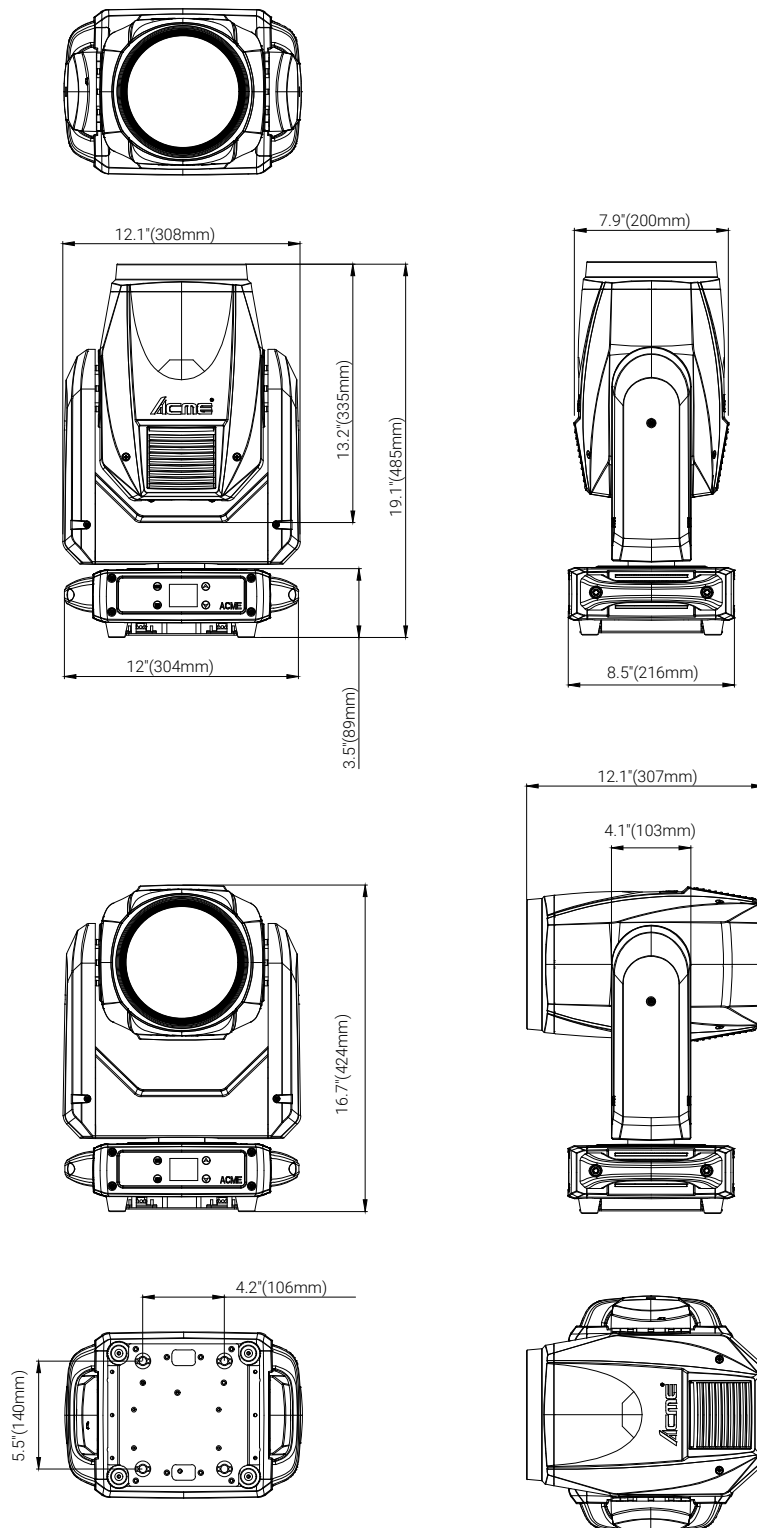
3-pin or 5-pin signal cable

BEAMONE

Indoor Moving Beam

SPEC SHEET

DIMENSIONS



Foshan YiFeng Electric Industrial Co.,Ltd.

No.898, Gaoming Avenue East, Hecheng Blvd, Gaoming District, Foshan, Guangdong, China.

Web: www.acmelighting.com Email: sales@acmelighting.com

All rights reserved by Acme®. Features, specifications and appearance are subject to change without notice.

REV: 20/03/2026

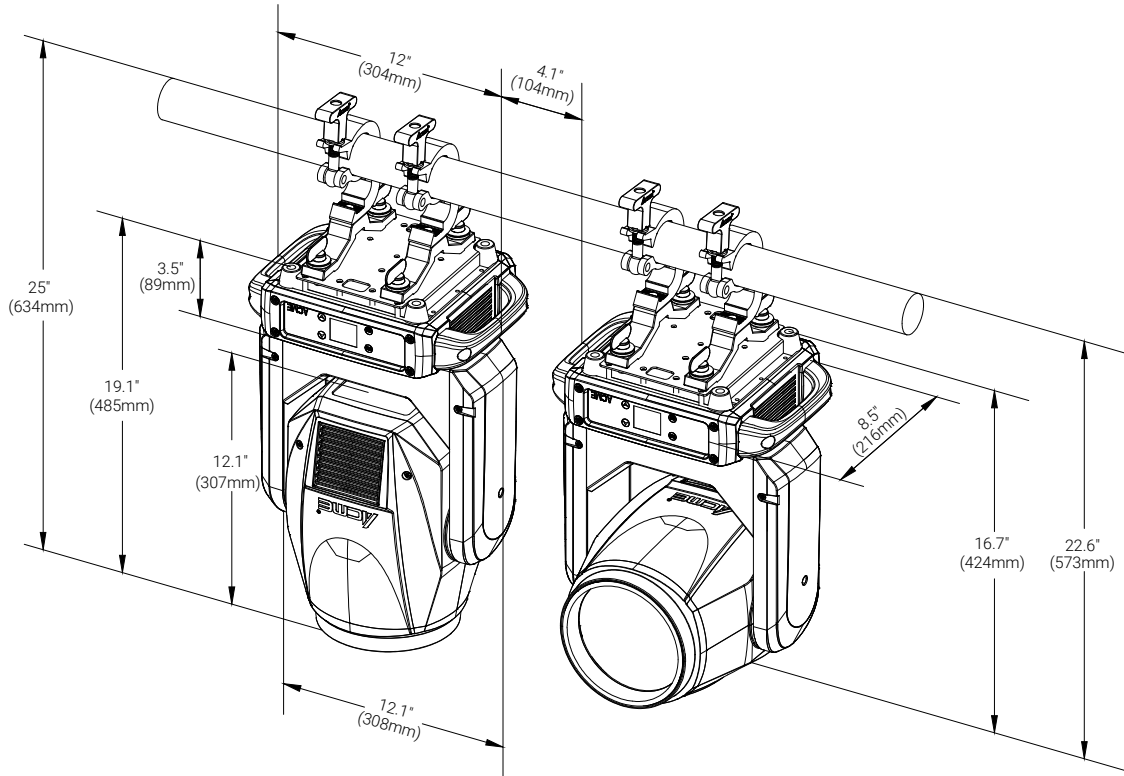
Acme®

BEAMONE

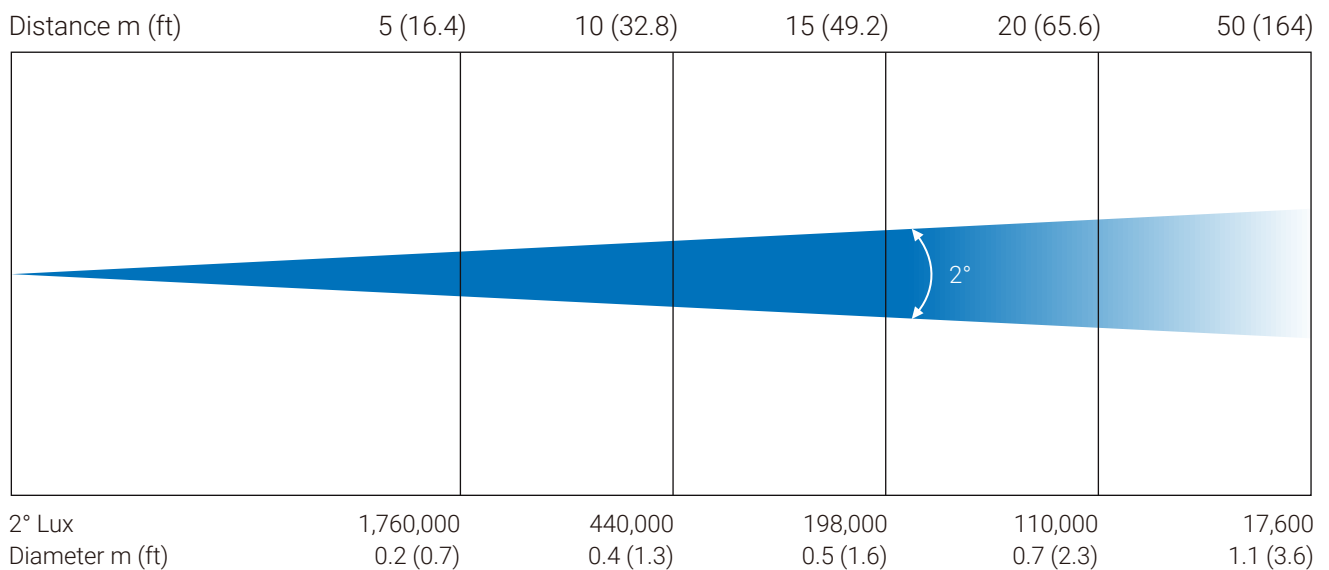
Indoor Moving Beam

SPEC SHEET

HANGING DIMENSIONS



PHOTOMETRIC



Foshan YiFeng Electric Industrial Co.,Ltd.

No.898, Gaoming Avenue East, Hecheng Blvd, Gaoming District, Foshan, Guangdong, China.

Web: www.acmelighting.com Email: sales@acmelighting.com

All rights reserved by Acme®. Features, specifications and appearance are subject to change without notice.

REV: 20/03/2026



BEAMONE

Indoor Moving Beam

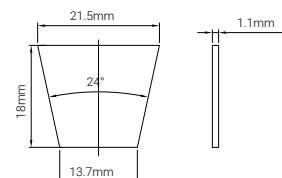
SPEC SHEET

DYNAMIC EFFECTS

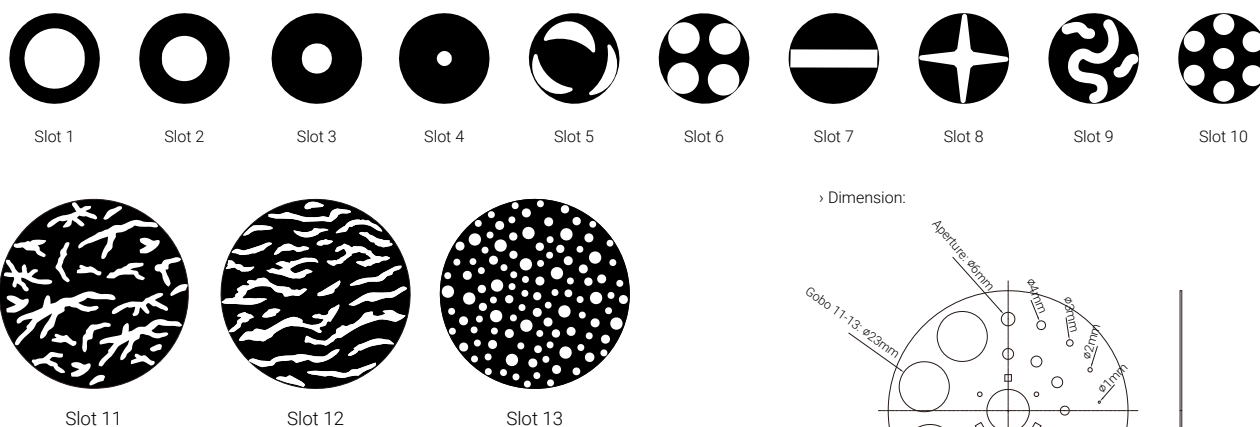
Color Wheel



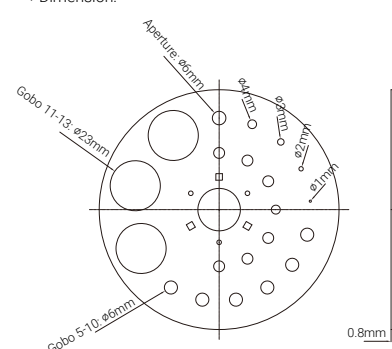
> Dimension:



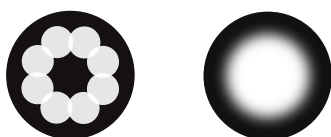
Static Gobo Wheel



> Dimension:



Prism/Frost Filter



1 x 8-Facet Circular Prism

1 Frost Filter

> Material: Aluminum alloy

Foshan YiFeng Electric Industrial Co.,Ltd.

No.898, Gaoming Avenue East, Hecheng Blvd, Gaoming District, Foshan, Guangdong, China.

Web: www.acmelighting.com Email: sales@acmelighting.com

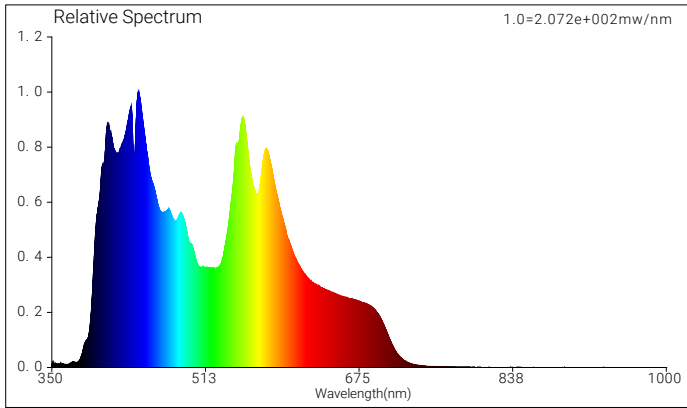
All rights reserved by Acme®. Features, specifications and appearance are subject to change without notice.

REV: 20/03/2026

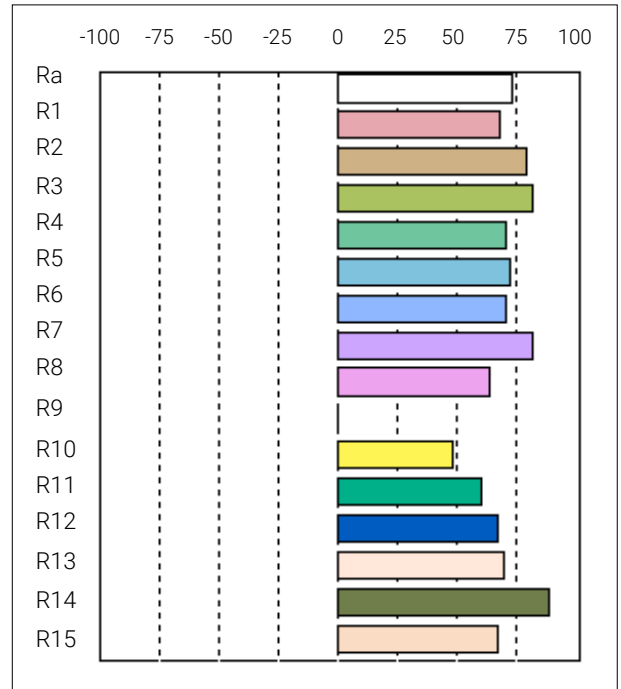


PHOTOMETRIC REPORT – CHROMATICITY

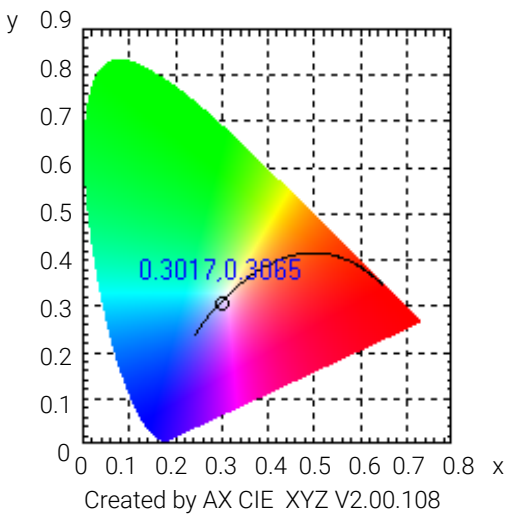
Spectral Distribution



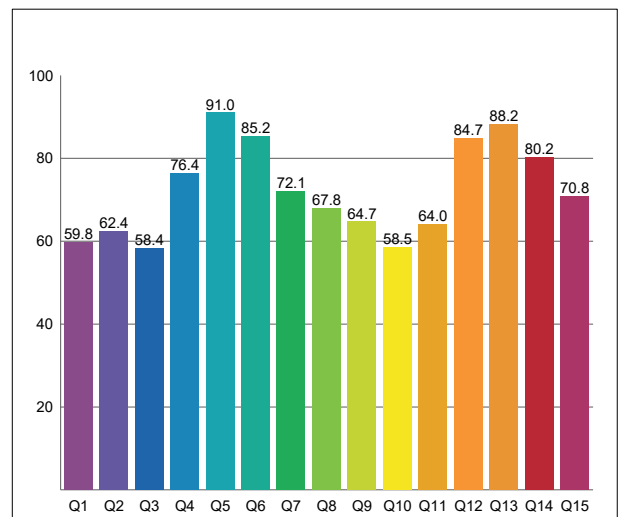
CRI: 74.9 (R1-R8)



CIE 1931 EVERFINE



CQS:71.6(Q1-Q8)



CRI C Values

C1	C2	C3	C4	C5	C6	C7	C8	C9	C10	C11	C12	C13	C14	C15	C16
69.7	80.3	83.3	72.2	73.6	72.1	83.1	64.9	0.0	49.8	62.1	68.3	70.9	89.8	68.2	74.9

TM30 R Values

R1	R2	R3	R4	R5	R6	R7	R8	R9	R10	R11	R12	R13	R14	R15
69.7	80.3	83.3	72.2	73.6	72.1	83.1	64.9	0.0	49.8	62.1	68.3	70.9	89.8	68.2

CQS Q Values

Q1	Q2	Q3	Q4	Q5	Q6	Q7	Q8	Q9	Q10	Q11	Q12	Q13	Q14	Q15
59.8	62.4	58.4	76.4	91.0	85.2	72.1	67.8	64.7	58.5	64.0	84.7	88.2	80.2	70.8

Colour Parameters

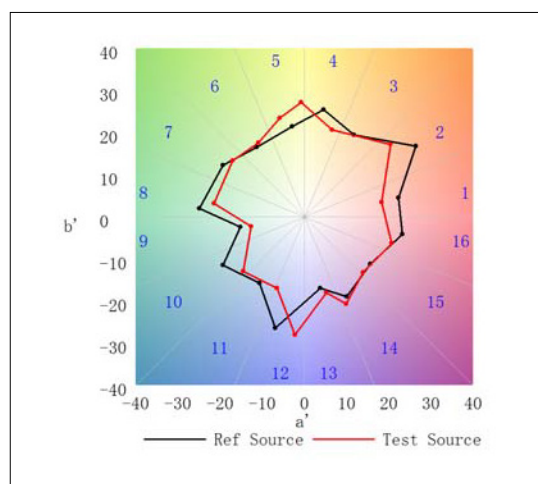
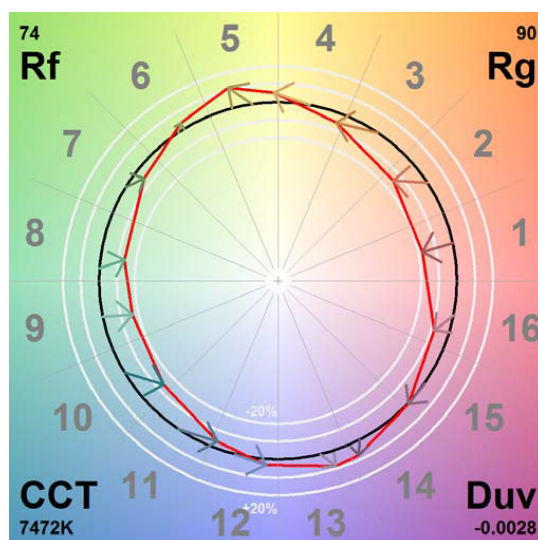
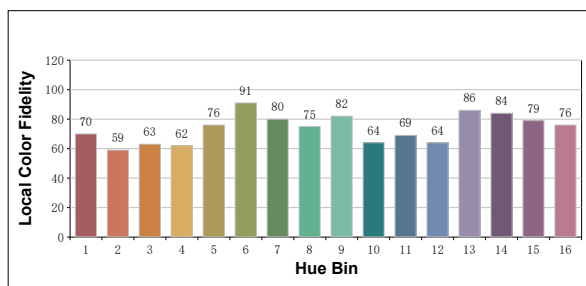
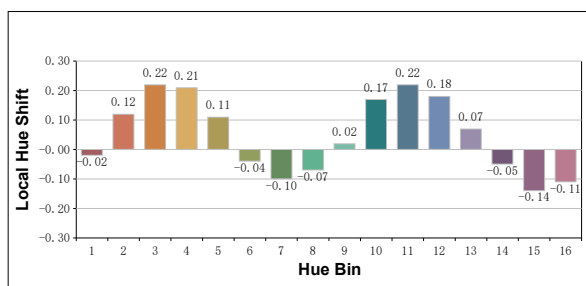
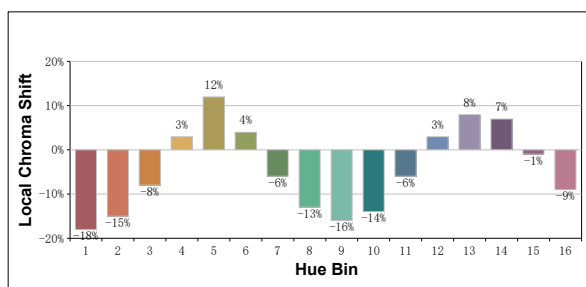
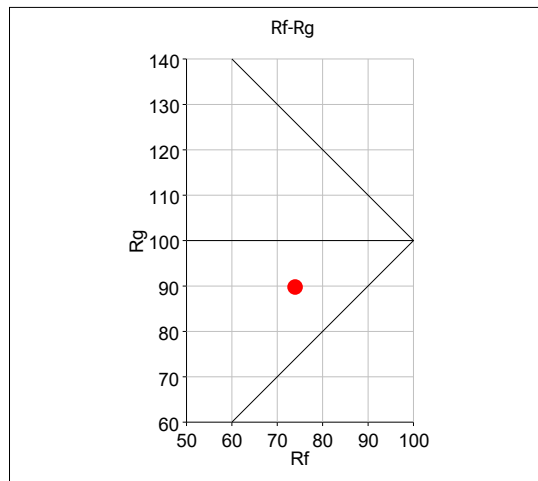
Color temperature	Color rendering index	Color fidelity	Color gamut	Color quality scale	Color coordinate cie 1931	Color coordinate cie 1931	Color coordinate	Color coordinate	Color deviation from black body
CCT	CRI	TM30 Rf	TM30 Rg	CQS	x	y	u	v	Δuv
7,472K	74.9	74	90	71.6	0.3017	0.3065	0.1987	0.4541	-0.0028

PHOTOMETRIC REPORT – TM-30

TM-30 Rf (IES TM-30-15 Fidelity Index): 74

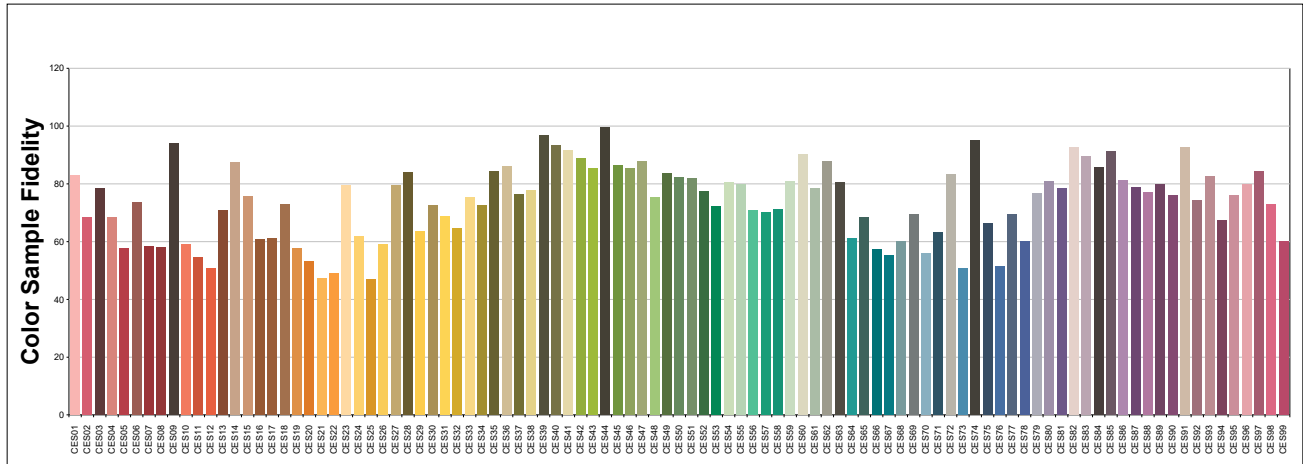
TM-30 Rg (IES TM-30-15 Fidelity Index): 90

Hue Bin	Hue Angle	Graphic shift(%)		
		Rf	Chroma	Hue
1	0.0° – 22.5°	70	-18	-2
2	22.5° – 45.0°	59	-15	12
3	45.0° – 67.5°	63	-8	22
4	67.5° – 90.0°	62	3	21
5	90.0° – 112.5°	76	12	11
6	112.5° – 135.0°	91	4	-4
7	135.0° – 157.5°	80	-6	-10
8	157.5° – 180.0°	75	-13	-7
9	180.0° – 202.5°	82	-16	2
10	202.5° – 225.0°	64	-14	17
11	225.0° – 247.5°	69	-6	22
12	247.5° – 270.0°	64	3	18
13	270.0° – 292.5°	86	8	7
14	292.5° – 315.0°	84	7	-5
15	315.0° – 337.5°	79	-1	-14
16	337.5° – 360.0°	76	-9	-11



PHOTOMETRIC REPORT – TM-30

Color Evaluation Sample



PHOTOMETRIC REPORT – TLCI-43

Color Evaluation Sample



Sector	Lightness	Chroma	Hue
R	5	4	1
R/Y	0	2	-5
Y	-2	-2	-7
Y/G	-1	-1	1
G	-1	-1	3
G/C	0	1	2
C	1	3	1
C/B	5	0	-7
B	1	-2	-4
B/M	2	-3	2
M	3	-1	4
M/R	5	0	6