

NOVA BEAM

Indoor Beam Moving Head

SPEC SHEET



Foshan YiFeng Electric Industrial Co.,Ltd.

No.898, Gaoming Avenue East, Hecheng Blvd, Gaoming District, Foshan, Guangdong, China.

Web: www.acmelighting.com Email: sales@acmelighting.com

All rights reserved by Acme®. Features, specifications and appearance are subject to change without notice.

REV: 15/04/2026

Acme®

NOVA BEAM

Indoor Beam Moving Head

SPEC SHEET

FIXTURE OVERVIEW

- The ACME **NOVA BEAM** is a compact 300W LED moving beam fixture, engineered for crisp and sharp projection in indoor applications. Delivering 5,700 lumens through a large 180 mm frontal lens, the fixture produces an ultra-tight 2° beam with stunning clarity
- Weighing just 17.2 kg (37.8 lbs), the **NOVA BEAM** is packed with all the creative design tools you need: a color wheel with 12 colors, a static gobo wheel with 7 static gobos and 3 effect gobos, dual rotating prisms (1 x 6-facet and 1 x 12-facet circular prism).
- Enhancing its flexibility, the fixture features a motorized linear iris and motorized focus system for precise beam control, along with a frost filter that softens edges to create smooth transitions between beam and wash effects.
- With its versatile features, and compact design, the **NOVA BEAM** is an ideal choice for theaters, clubs, and any indoor production requiring high-impact visuals.



FEATURE HIGHLIGHTS

- LED engine comprised of 300W LED
- 180 mm diameter frontal lens
- Beam Angle: 2°
- Light Engine Luminous Output: 11,100 lumens
- Fixture Luminous Output: 5,700 lumens
- Color Temperature Output of Fixture: 8,000K
- 1 Color Wheel: 12 colors, plus open
- 1 Static Gobo Wheel: 7 gobos and 3 effect gobos, plus open
- 2 Combinable Rotating and Indexable Prisms: 1 x 6-facet circular prism, 1 x 12-facet circular prism, rotatable in both directions
- 1 frost filter
- Outstanding strobe effect with variable speed
- Motorized focus system

NOVA BEAM

Indoor Beam Moving Head

SPEC SHEET

TECHNICAL SPECIFICATIONS

Model

- Model Name: NOVA BEAM
- Model Code: XA 300 BEAM

Light Source

- Light Source: 300W LED engine
- Color Temperature Output of Fixture: 8,000K
- Life Expectancy: 20,000 hours
- *Source manufacturer specification

Photometric Data

- Light Engine Luminous Output: 11,100 lumens
- Fixture Luminous Output: 5,700 lumens
- CCT: 8,000K (+/- 200K)
- Ra: 67
- TM-30 Rf (IES TM-30-15 Fidelity Index): 67
- TM-30 Rg (IES TM-30-15 Fidelity Index): 94
- TLCI: 42

Optical System

- Beam Angle: 2°
- Diameter of Frontal Lens: 180 mm

Control & Program

- 4 touch button control panel
- Display: LCD display
- Protocols: DMX, RDM, Art-Net, sACN, NFC
- Setting and Addressing: Display menu, RDM
- DMX Modes: 1
- DMX Channels: 19
- Firmware Upgrade: Upgrade via DMX link or USB stick

Pan & Tilt

- Pan: 540°
- Tilt: 270°
- Automatic Pan/Tilt position correction
- Resolution: 16 bit
- Pan/Tilt lock

Color Wheel

- 1 Color Wheel: 12 colors, plus open

Static Gobo Wheel

- 1 Static Gobo Wheel:
 - 7 gobos and 3 effect gobos, plus open
- Gobo Dimensions
 - External Diameter: 108 mm (4.3")
- Coating: Black high-temp resistant coating
- Material: Aluminum sheet

Frost

- 1 frost filter

Focus

- Motorized focus system

Prism

- 2 Combinable Rotating and Indexable Prisms:
 - 1 x 6-facet circular prism, 1 x 12-facet circular prism, rotatable and overlayable in both directions

Electrical

- Input Voltage Range: 100-240Vac; 50/60Hz
- Power Consumption: 425W
- Power In/Out: Power connector in/out
- Data In/Out: 3-pin or 5-pin XLR, RJ45 connector

Physical

- Weight: 17.2 kg (37.8 lbs)
- Length (Head): 352 mm (13.9")
- Length (Base): 309 mm (12.2")
- Width (Across Yoke): 300 mm (11.8")
- Height (Head Up): 520 mm (20.5")

Construction

- Housing: Eco-friendly flame-retardant nylon
- Color: Black
- Protection Rating: IP20

Work Environment

- Maximum Ambient Temperature: 45°C
- Minimum Operating Temperature: -10°C
- Maximum Surface Temperature: 65°C

NOVA BEAM

Indoor Beam Moving Head

SPEC SHEET

Acoustic Data

- Noise Level:
Standard Mode: 50 dB(A) @ 1 m
Quiet Mode: 45 dB(A) @ 1 m

Installation

- Horizontal or vertical mounting
- 2 omega brackets
- Safety cable attachment point

Approvals

- CE compliant
EMC directive 2014/30/EU
LVD directive 2014/35/EU
- UKCA compliant
Electromagnetic Compatibility Regulations 2016
Electrical Equipment (Safety) Regulations 2016
- cETLus compliant
UL 1573
CSA C22.2 #166



INCLUDED ITEMS

Included Items

- Digital user manual
- Power cable
- 2 omega brackets (3002003002)

ORDERING INFORMATION

Optional Accessories (With Order Code)

- Flight Case
Standard: TBD
North American Standard: TBD
- Clamp: C-250B (2060001632-B)
- Safety Cable: SW-05 (2060001603-E)
- Signal Cable: 3-pin or 5-pin signal cable

Carton Dimensions

- Width: 460 mm (18.1")
- Depth: 400 mm (15.8")
- Height: 600 mm (23.6")
- Weight:
G.W.: 22 kg (48.5 lbs) (one-pack loader carton)



C-250B: 2060001632-B



SW-05: 2060001603-E



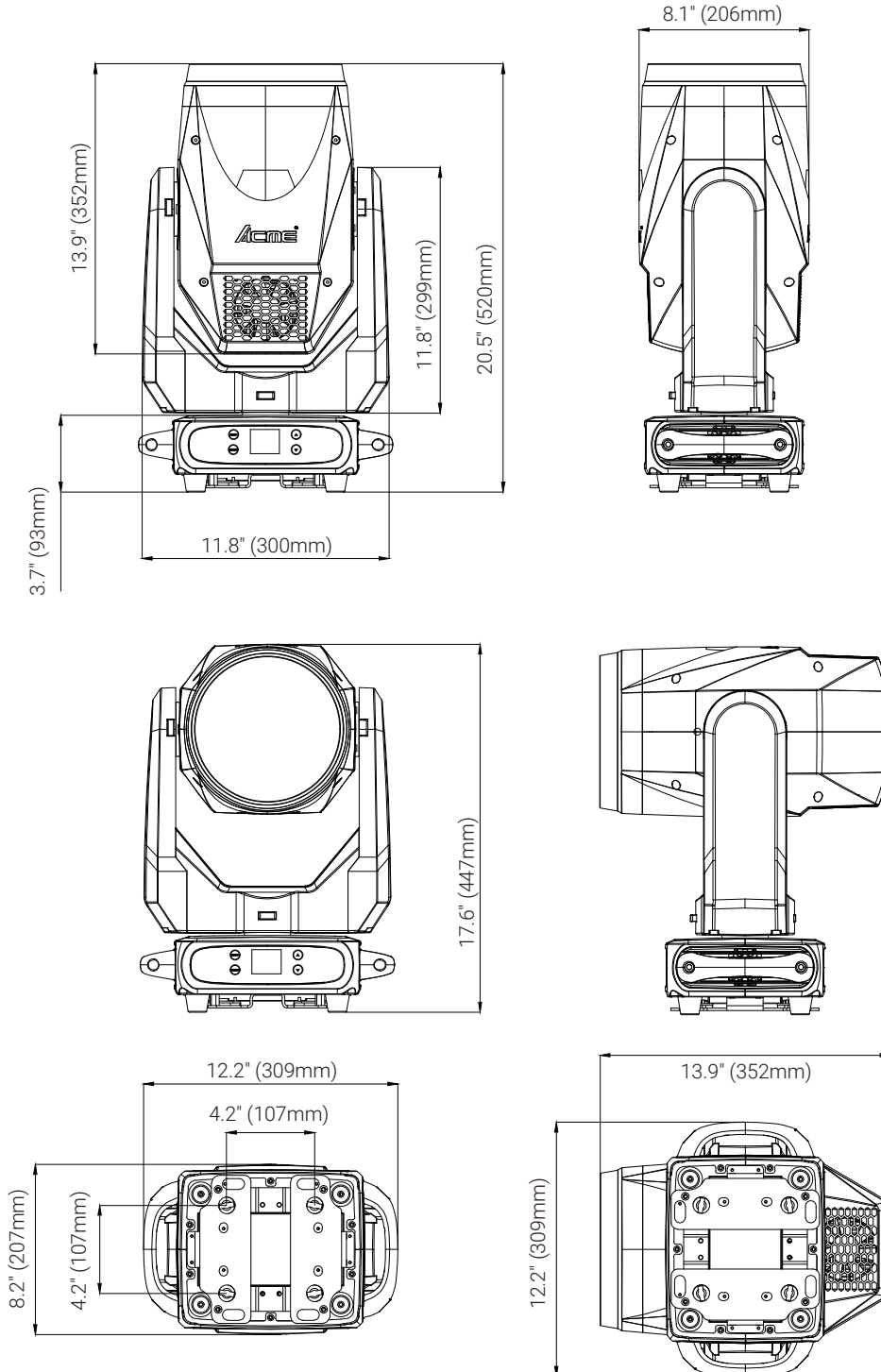
3-pin or 5-pin signal cable

NOVA BEAM

Indoor Beam Moving Head

SPEC SHEET

DIMENSIONS



Foshan YiFeng Electric Industrial Co.,Ltd.

No.898, Gaoming Avenue East, Hecheng Blvd, Gaoming District, Foshan, Guangdong, China.

Web: www.acmelighting.com Email: sales@acmelighting.com

All rights reserved by Acme®. Features, specifications and appearance are subject to change without notice.

REV: 15/04/2026

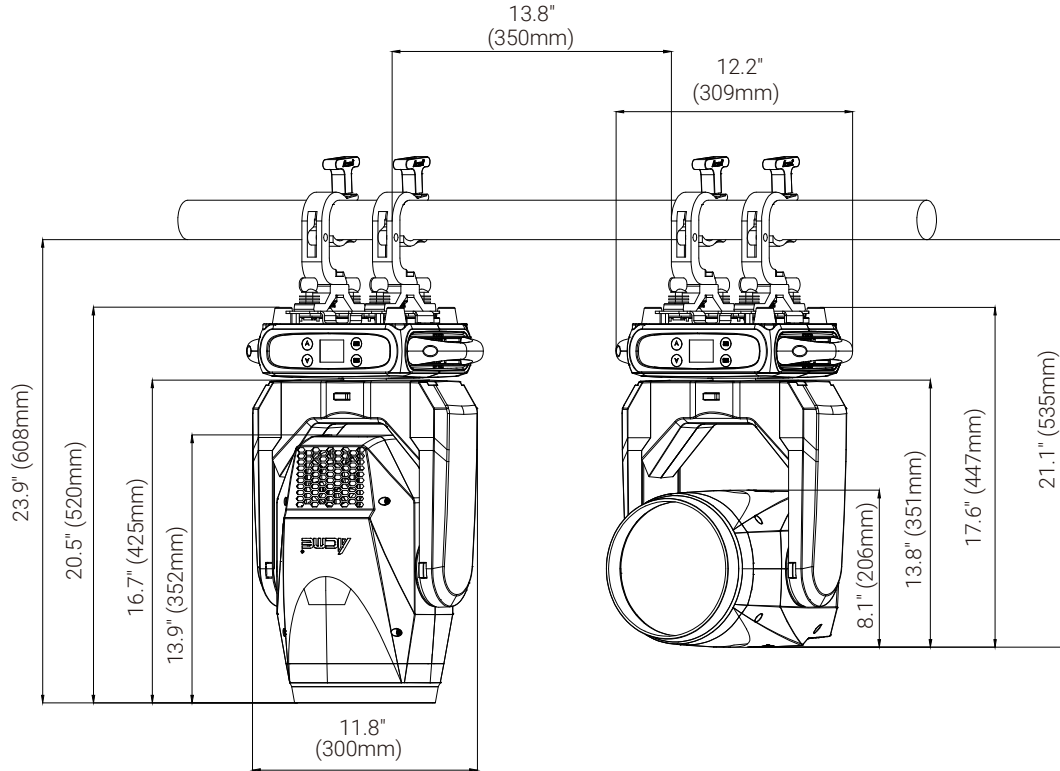


NOVA BEAM

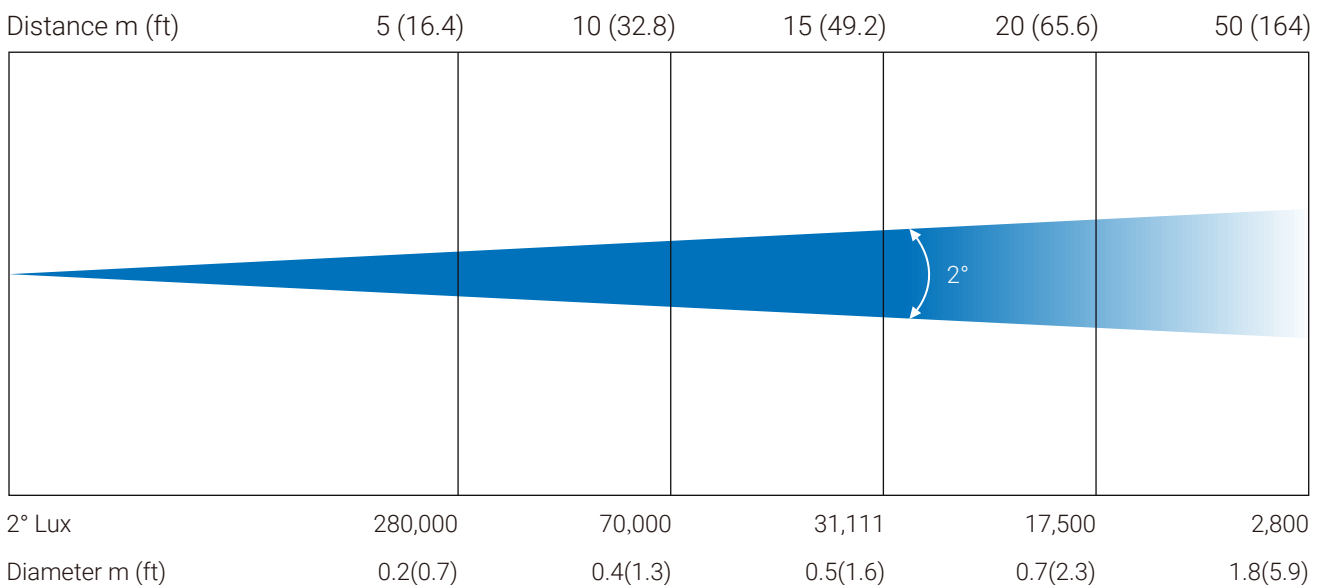
Indoor Beam Moving Head

SPEC SHEET

HANGING DIMENSIONS



PHOTOMETRIC



Foshan YiFeng Electric Industrial Co.,Ltd.

No.898, Gaoming Avenue East, Hecheng Blvd, Gaoming District, Foshan, Guangdong, China.

Web: www.acmelighting.com Email: sales@acmelighting.com

All rights reserved by Acme®. Features, specifications and appearance are subject to change without notice.

REV: 15/04/2026



NOVA BEAM

Indoor Beam Moving Head

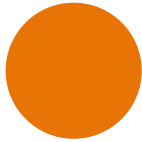
SPEC SHEET

DYNAMIC EFFECTS

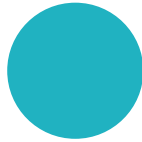
Color Wheel



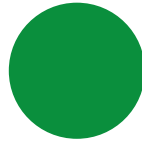
Red
Slot 1



Orange
Slot 2



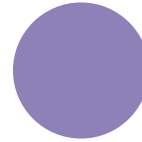
Aqua Marine
Slot 3



Green
Slot 4



Light Green
Slot 5



Lavender
Slot 6



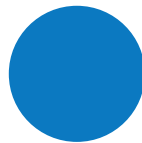
Pink
Slot 7



Light Yellow
Slot 8



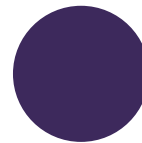
Magenta
Slot 9



Blue
Slot 10

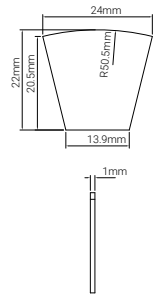


Yellow
Slot 11



UV
Slot 12

Dimension:



Static Gobo Wheel



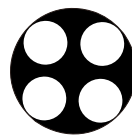
Slot 1



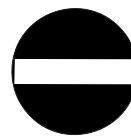
Slot 2



Slot 3



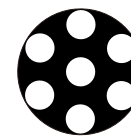
Slot 4



Slot 5



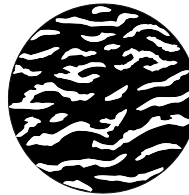
Slot 6



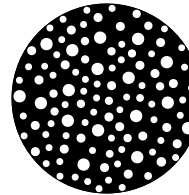
Slot 7



Slot 8

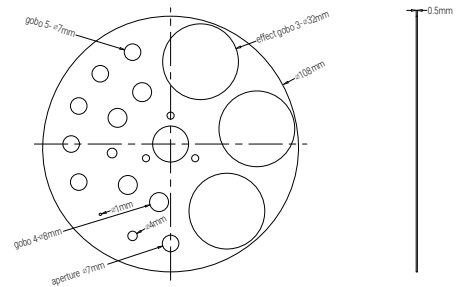


Slot 9



Slot 10

Dimension:



Material: Aluminum alloy

Prism/Frost Filter



1 x 6-Facet
Circular Prism



1 x 12-Facet
Circular Prism



1 Frost Filter

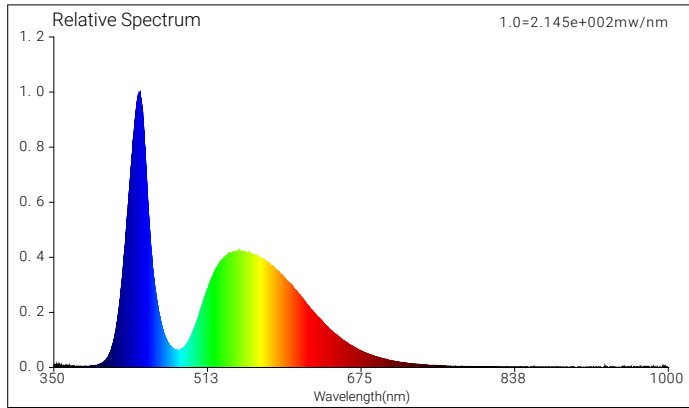
NOVA BEAM

Indoor Beam Moving Head

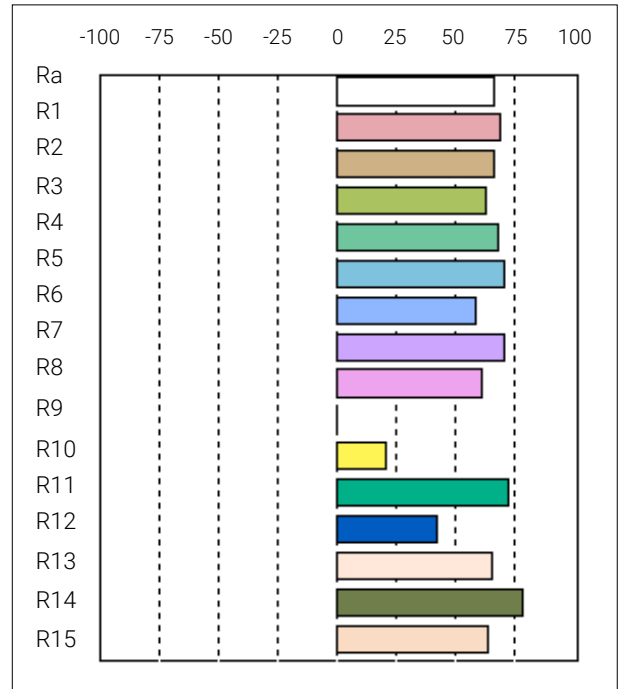
SPEC SHEET

PHOTOMETRIC REPORT – CHROMATICITY

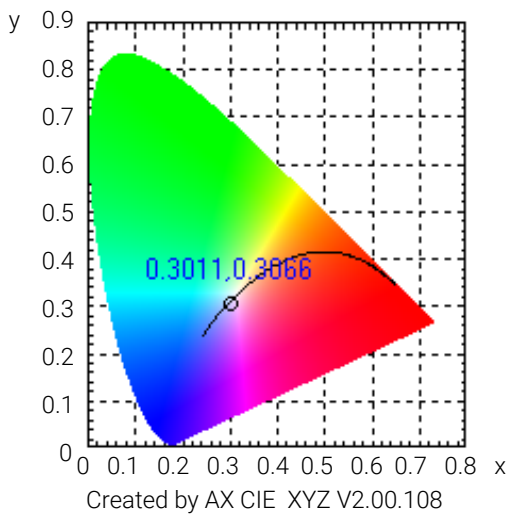
Spectral Distribution



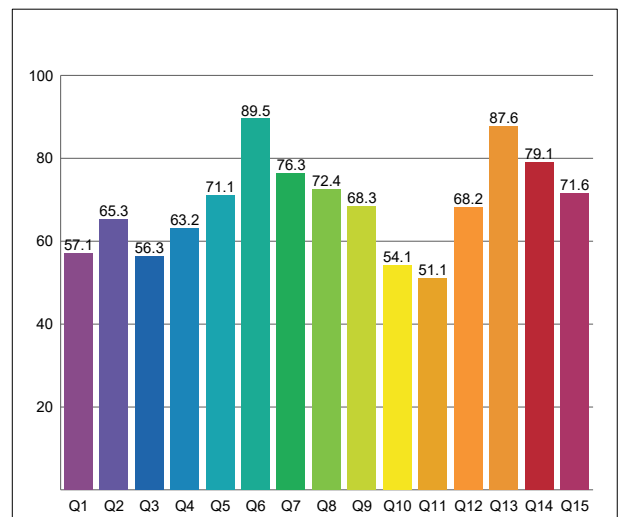
CRI: 67.3 (R1-R8)



CIE 1931 EVERFINE



CQS:68.9(Q1-Q8)



CRI C Values

C1	C2	C3	C4	C5	C6	C7	C8	C9	C10	C11	C12	C13	C14	C15	C16
70.2	67.9	64.1	69.8	72.2	60.1	71.6	62.3	0.0	22.1	73.8	43.53	66.9	79.3	65.1	67.3

TM30 R Values

R1	R2	R3	R4	R5	R6	R7	R8	R9	R10	R11	R12	R13	R14	R15
70.2	67.9	64.1	69.8	72.2	60.1	71.6	62.3	0.0	22.1	73.8	43.5	66.9	79.3	65.1

CQS Q Values

Q1	Q2	Q3	Q4	Q5	Q6	Q7	Q8	Q9	Q10	Q11	Q12	Q13	Q14	Q15
57.1	65.3	56.3	63.2	71.1	89.5	76.3	72.4	68.3	54.1	51.1	68.2	87.6	79.1	71.6

Colour Parameters

Color temperature	Color rendering index	Color fidelity	Color gamut	Color quality scale	Color coordinate cie 1931	Color coordinate cie 1931	Color coordinate	Color coordinate	Color deviation from black body
CCT	CRI	TM30 Rf	TM30 Rg	CQS	x	y	u	v	Δuv
7,513K	67.3	67	94	68.9	0.3011	0.3066	0.1982	0.4541	-0.0024

Foshan YiFeng Electric Industrial Co.,Ltd.

No.898, Gaoming Avenue East, Hecheng Blvd, Gaoming District, Foshan, Guangdong, China.

Web: www.acmelighting.com Email: sales@acmelighting.com

All rights reserved by Acme®. Features, specifications and appearance are subject to change without notice.

REV: 15/04/2026



NOVA BEAM

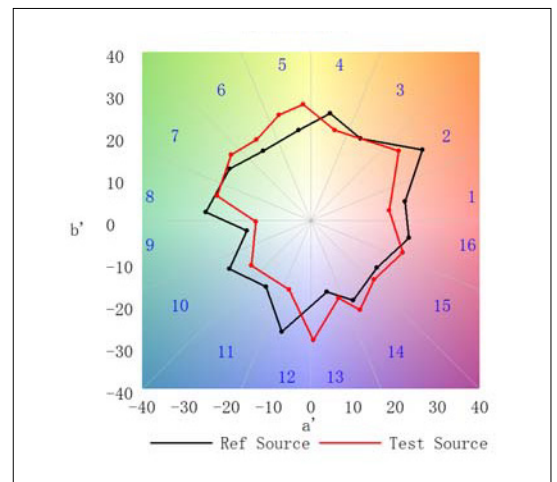
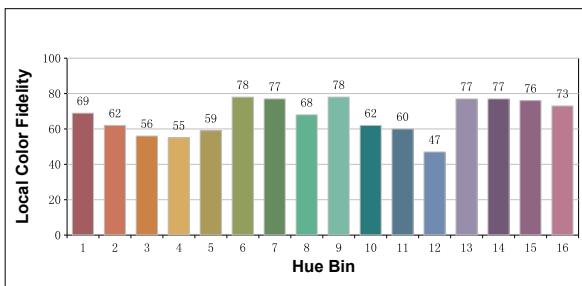
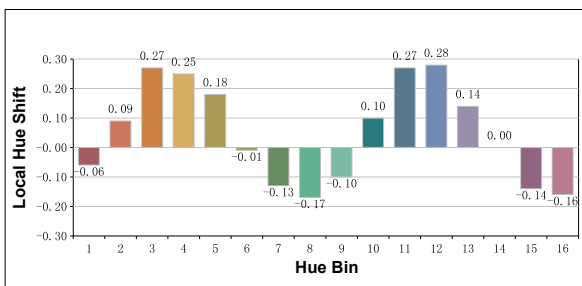
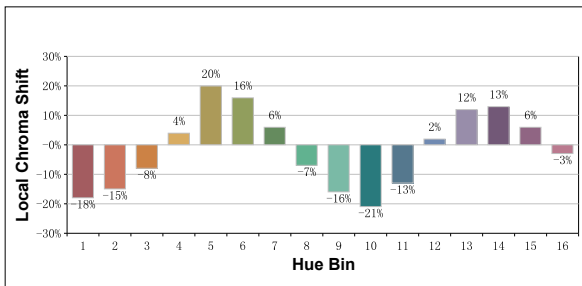
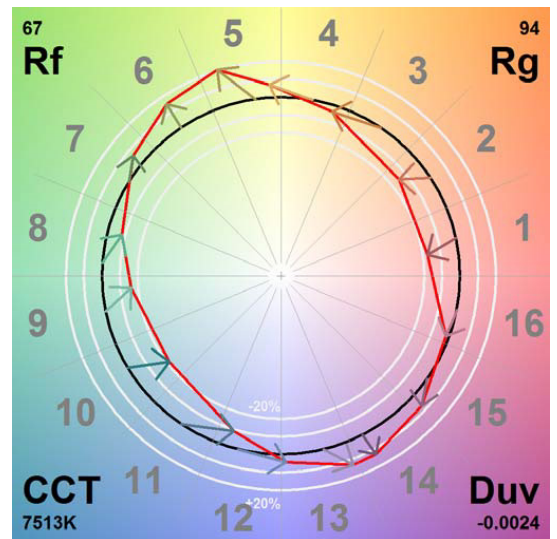
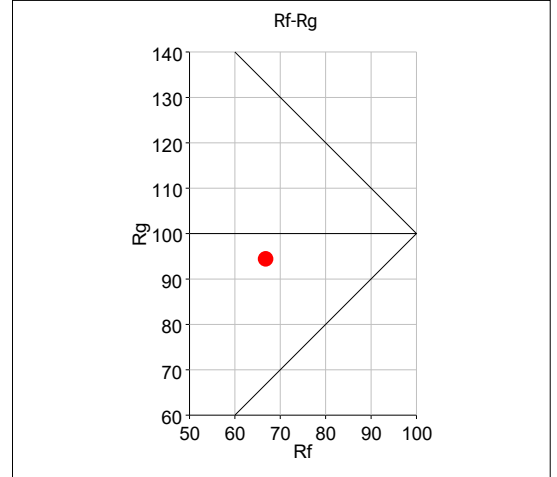
Indoor Beam Moving Head

SPEC SHEET

PHOTOMETRIC REPORT – TM-30

TM-30 Rf (IES TM-30-15 Fidelity Index): 67
 TM-30 Rg (IES TM-30-15 Fidelity Index): 94

Hue Bin	Hue Angle	Graphic shift(%)		
		Rf	Chroma	Hue
1	0.0° – 22.5°	69	-18	-6
2	22.5° – 45.0°	62	-15	9
3	45.0° – 67.5°	56	-8	27
4	67.5° – 90.0°	55	4	25
5	90.0° – 112.5°	59	20	18
6	112.5° – 135.0°	78	16	-1
7	135.0° – 157.5°	77	6	-13
8	157.5° – 180.0°	68	-7	-17
9	180.0° – 202.5°	78	-16	-10
10	202.5° – 225.0°	62	-21	10
11	225.0° – 247.5°	60	-13	27
12	247.5° – 270.0°	47	2	28
13	270.0° – 292.5°	77	12	14
14	292.5° – 315.0°	77	13	0
15	315.0° – 337.5°	76	6	-14
16	337.5° – 360.0°	73	-3	-16



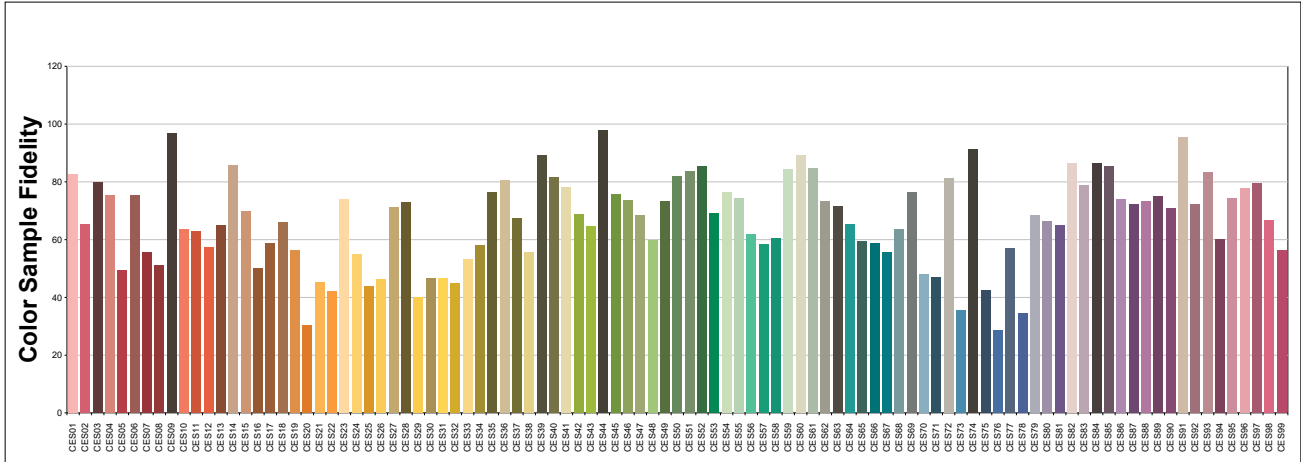
NOVA BEAM

Indoor Beam Moving Head

SPEC SHEET

PHOTOMETRIC REPORT – TM-30

Color Evaluation Sample



PHOTOMETRIC REPORT – TLCI-42

Color Evaluation Sample



Sector	Lightness	Chroma	Hue
R	5	3	2
R/Y	0	1	-5
Y	-2	-2	-7
Y/G	-2	-3	0
G	-3	-3	4
G/C	1	-1	7
C	3	1	2
C/B	5	2	-2
B	1	-4	-5
B/M	2	-5	3
M	5	-2	9
M/R	5	1	5